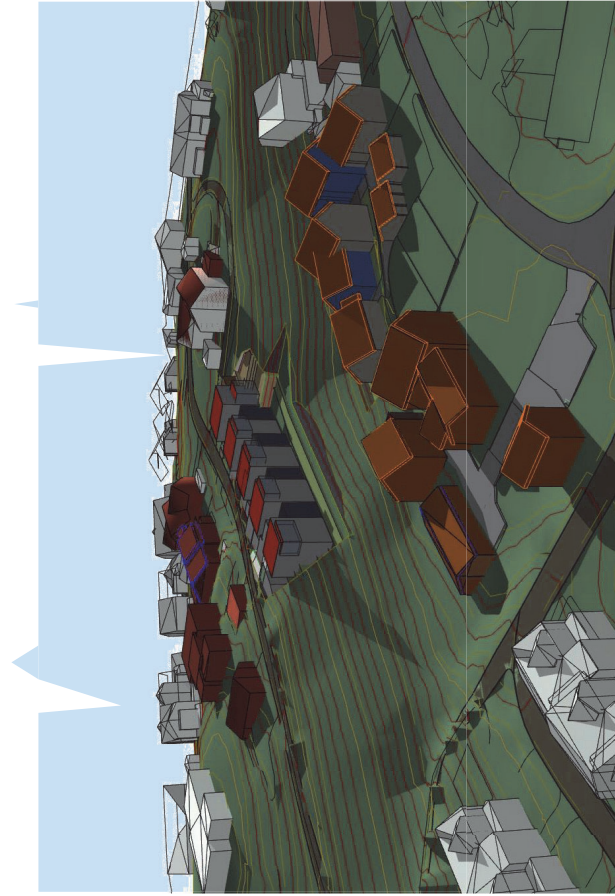
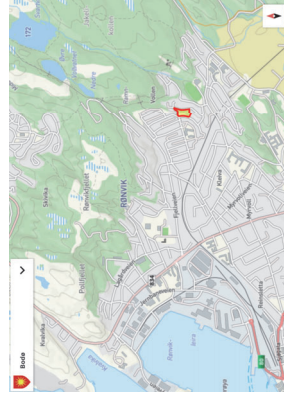
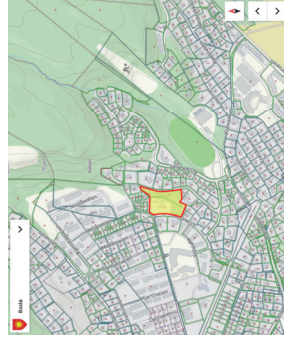




Lillevolden 1A, Rørvik - Situasjonsplan m 1:1000



TERRENGMODELL UTEN VEGETASJON

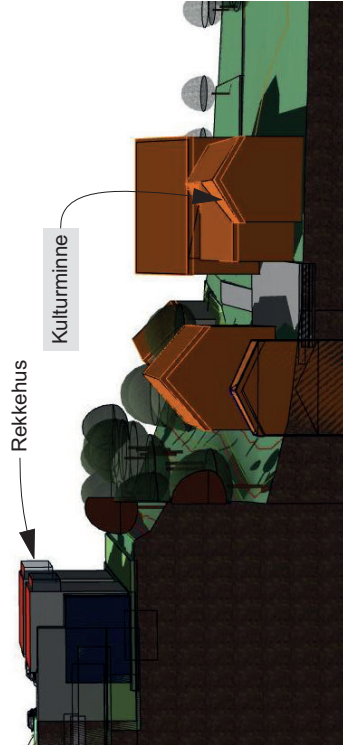
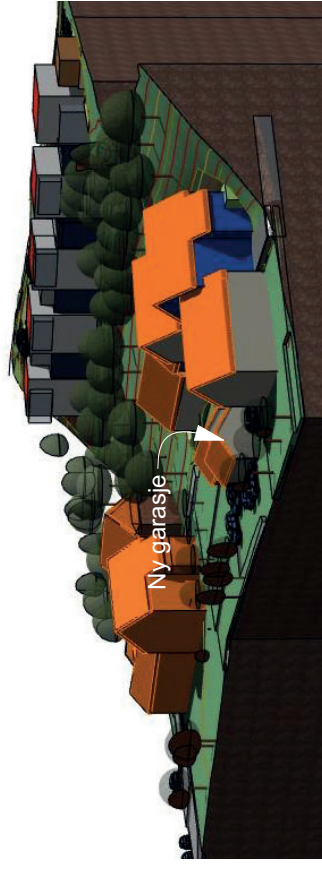
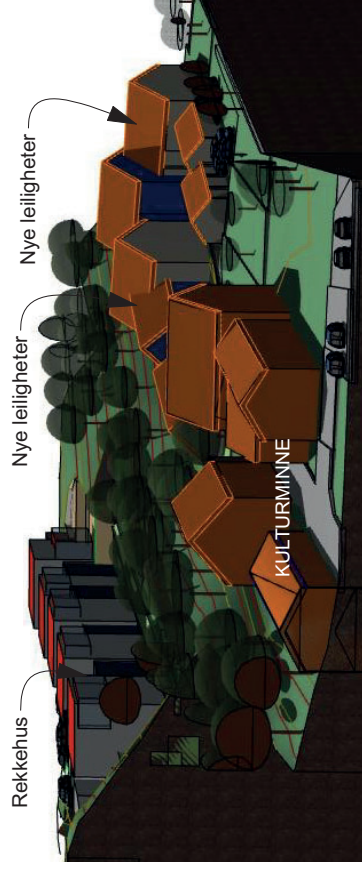


TERRENGMODELL UTEN VEGETASJON





FORESLÅTT SITUASJON



TERRENGMODELL / SNITT

MODELLSHOTS

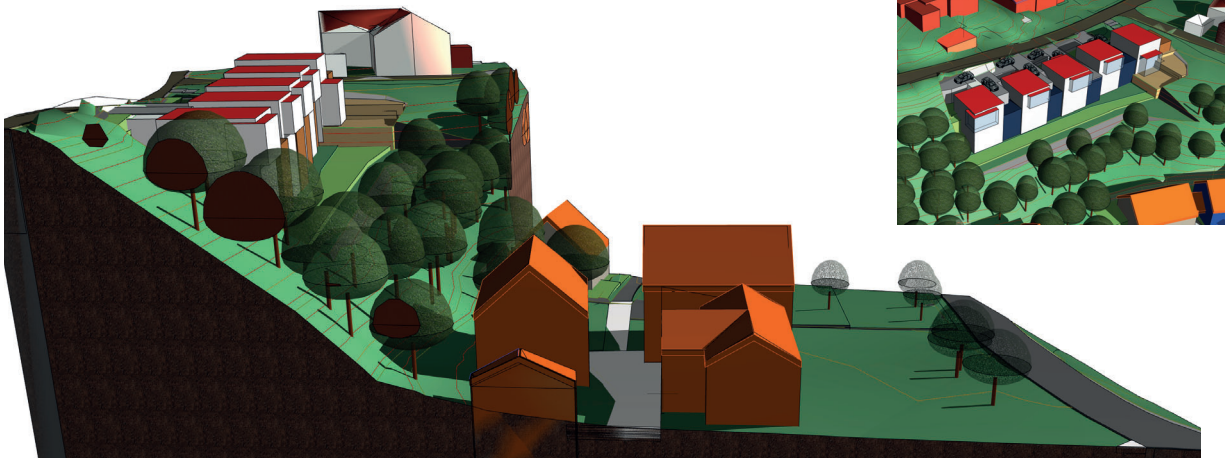


TERRENGMODELL / SNITT

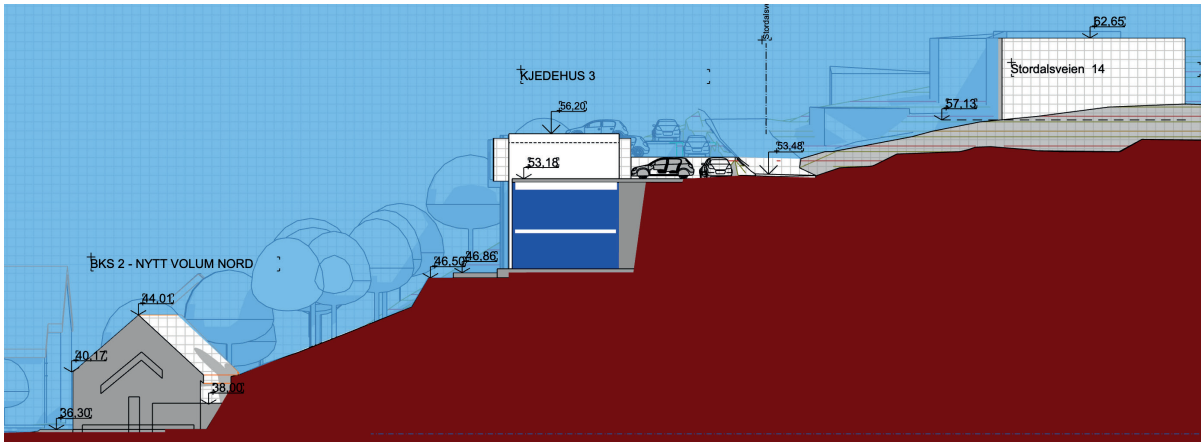




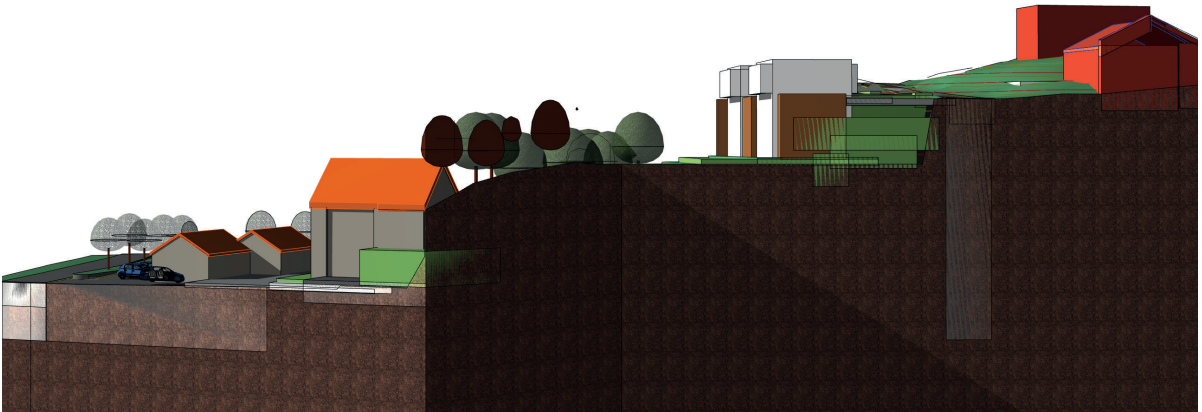
ILLUSTRASJONSPLAN



Terrenngnitt nord for rekkehus i senter innkjørsel til kulturminne.



Snitt mellom rekkehus 2 og 3

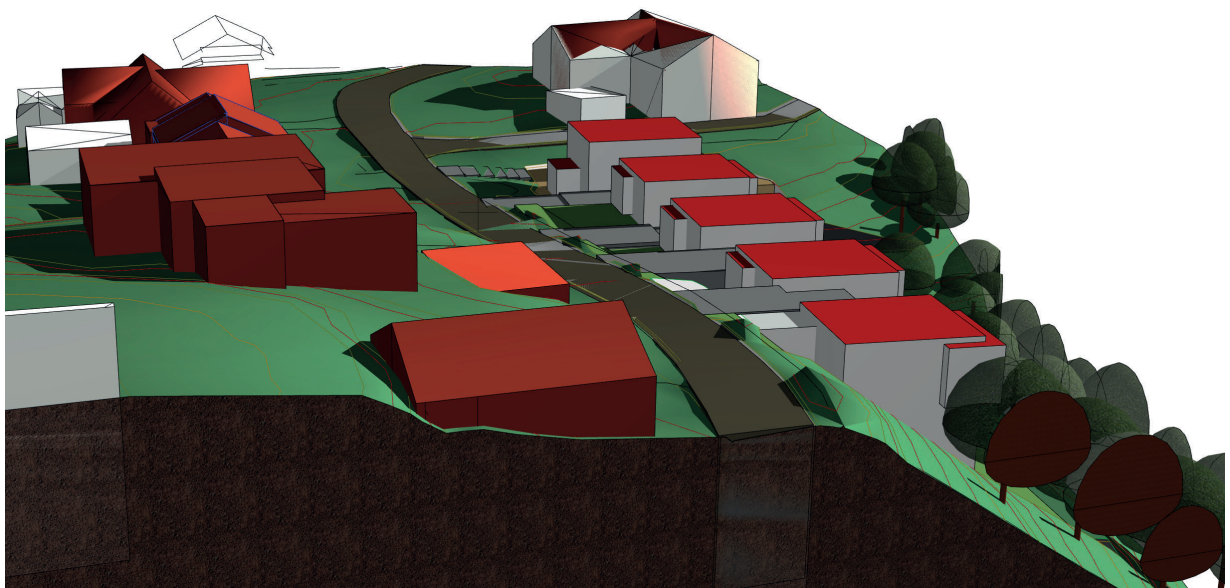
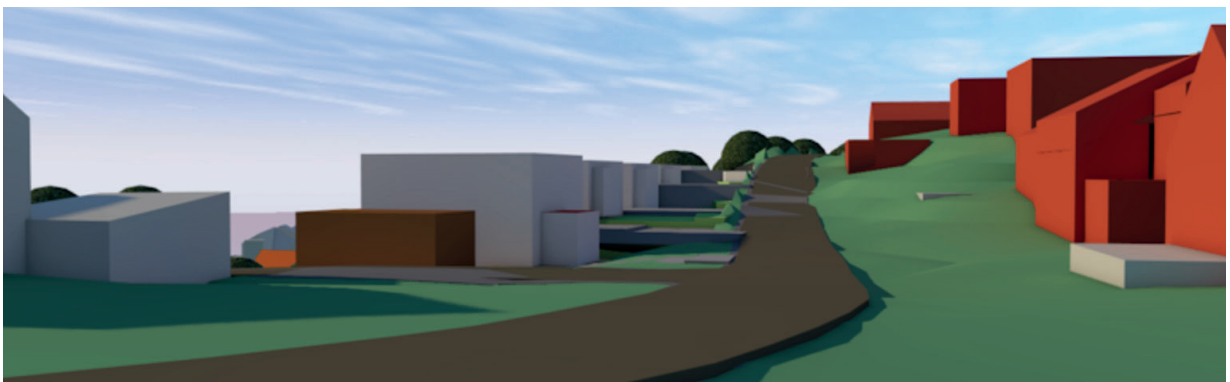
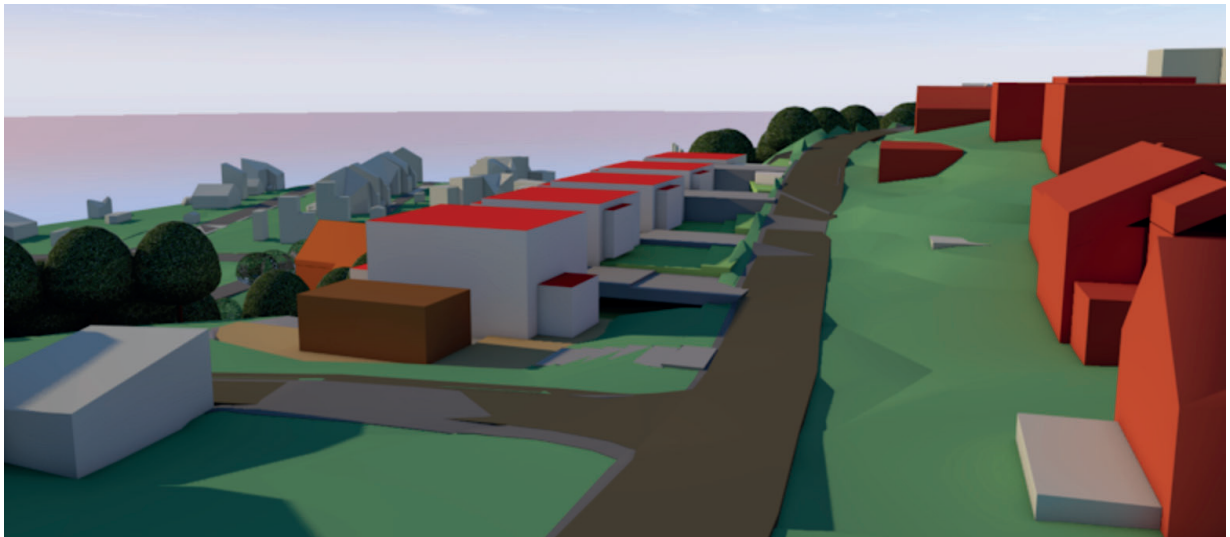


Snitt mellom rekkehus 3 og 4



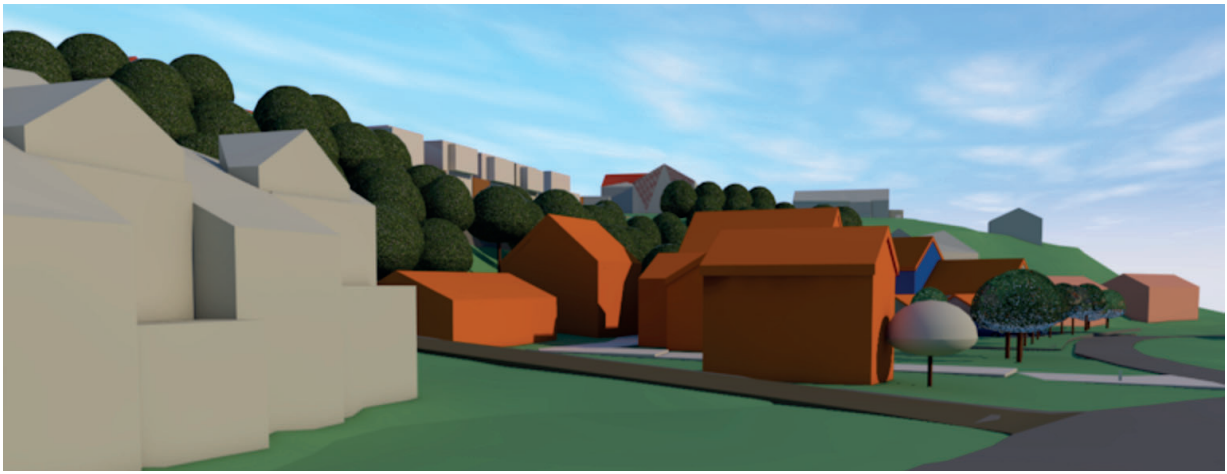
All bebyggelse sett fra vest. Røde og grå volumer øverst er eksisterende bebyggelse



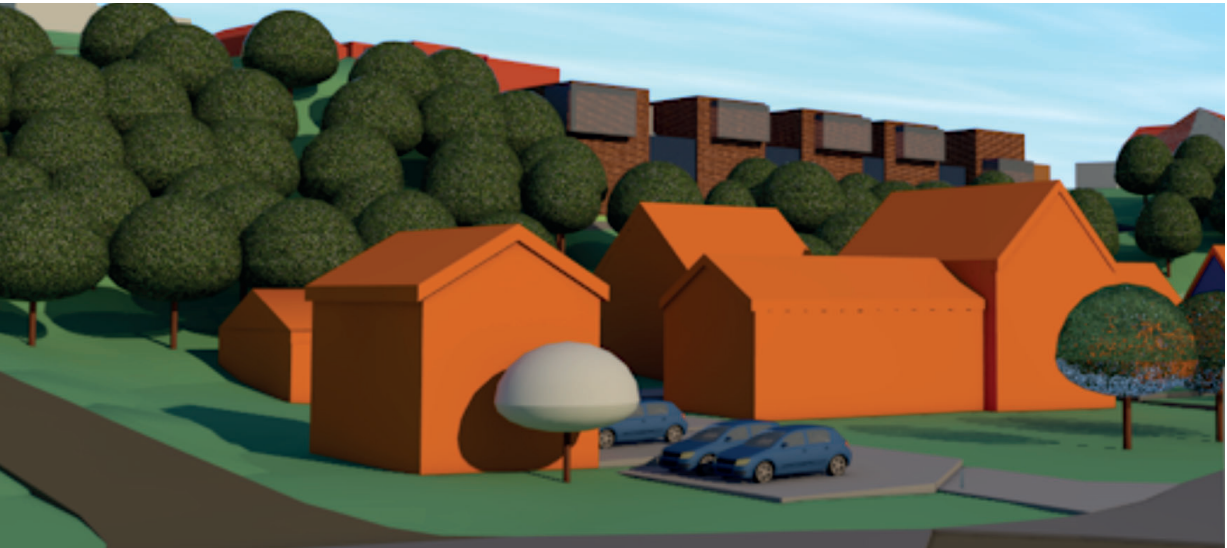


Stordalsveien. Screenshots fra 3D-Modellen

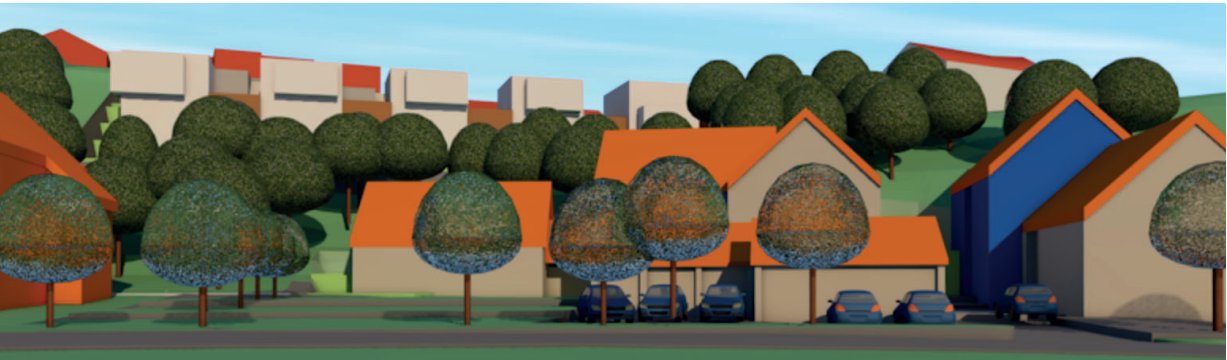




BEBYGGELSE SETT FRA HELLÅSVEIEN - SCREENSHOTS FRA 3D-MODELL



BEBYGGELSE SETT FRA KRYSSET LILLEVOLLEN/HELLÅSVEIEN. REKKEHUS MED MØRK BRUN TREPANEL. SCREENSHOTS FRA 3D-MODELL



BEBYGGELSE SETT FRA LILLEVOLLEN - RØDE VOLUMER BAK REKKEHUS ER EKSIST BEBYGGELSE.S



BEBYGGELSE SETT FRA HELLÅSVEIEN



BEBYGGELSE SETT FRA LILLEVOLLEN SYD





NYE REKKEHUS OG EKSIST BEBYGGELSE I STORDALSVEIEN SETT FRA GÅRDSTUN - SCREENSHOTS FRA 3D-MODELL

